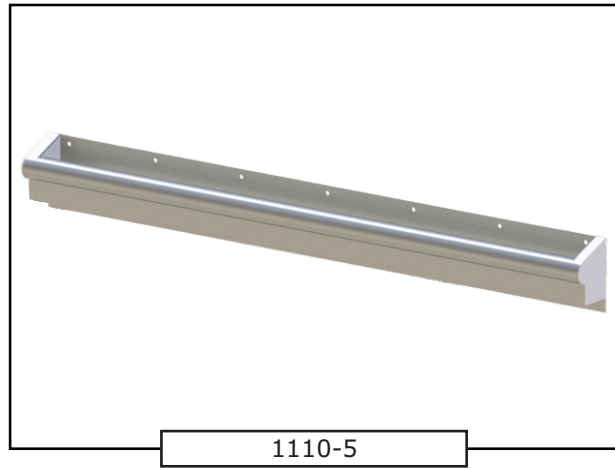




### Ligature Resistant Grab Bars

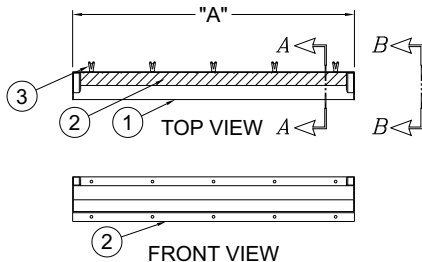
Grab Bars are designed to help meet the needs of the disabled. Grab bars are constructed of 1-1/2" outer diameter type 304 stainless steel tubing with a 14 gage "L" shaped closure strip welded to the bottom of the bar. Closure plate includes intermittent welds along wall plate and small holes opposite grab bar to prevent pooling of water and allow water to drain. Exposed surfaces are polished to a satin finish. Grab bars meet or exceed ANSI, UFAS and ADA requirements for structural strength and have a 1-1/2" space between the grab bar and the mounting surface. Selection of appropriate length, configuration, adequate wall backing and installation dependent on application will determine compliance for accessibility. Consult applicable codes for complete requirements. Compliance is subject to the interpretation and requirements of the local code authority. Grab bars are not recommended for installation in areas of high security.



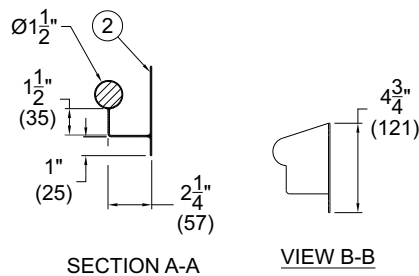
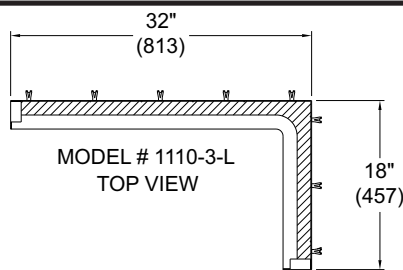
### MODEL NUMBER AND OPTIONS SELECTION:

#### BASE MODEL NUMBER

- 1110-1 Grab Bar with "L" Closure Strip, 24" Long
- 1110-2 Grab Bar with "L" Closure Strip, 30" Long
- 1110-3-L Left Orientation Two-Wall Grab Bar with "L" Closure Strip, 32" x 18" Long
- 1110-3-R Right Orientation Two-Wall Grab Bar with "L" Closure Strip, 32" x 18" Long
- 1110-4 Grab Bar with "L" Closure Strip, 36" Long
- 1110-5 Grab Bar with "L" Closure Strip, 42" Long
- 1110-6 Grab Bar with "L" Closure Strip, 48" Long
- 1110-7 Grab Bar with "L" Closure Strip, 18" Long



MODEL NO.	"A"
1110-1	24" (610)
1110-2	30" (762)
1110-4	36" (914)
1110-5	42" (1067)
1110-6	48" (1219)



#### NOTES:

1. 1-1/2" O.D. Stainless Steel Tube.
2. Intermittent Welded Closure Strip w/ Anchoring Plate.
3. Wall Anchors by Others



All dimensions are nominal and subject to manufacturer's change without notice. Whitehall assumes no responsibility for use of void or superseded data © Whitehall Manufacturing, Member of Morris Group International. Please visit [www.whitehallmfg.com](http://www.whitehallmfg.com) for most current specifications.

### SELECTION SUMMARY & APPROVAL FOR MANUFACTURING

Model Number & Options \_\_\_\_\_ Quantity \_\_\_\_\_  
 Company \_\_\_\_\_ Date \_\_\_\_\_  
 Contact \_\_\_\_\_ Title \_\_\_\_\_  
 Approval for Manufacturing/Signature \_\_\_\_\_