



Penal-Ware® 1485 Series 15" Econo Lav-Toilet Comby



1485-CT-2-BPH-03-FV

1485-AL-2-BPH-03-FV-PHRF

Fixture May Show Some Available Options

Please visit www.acorneng.com for most current specifications.

15" Econo Lav-Toilet Comby

Fixture is arranged to be installed on finished wall and serviced from an accessible pipe chase. Optional Wall Sleeve or Metal Template is recommended for all installations for required wall openings. Fixture is fabricated from 16 gage, type 304 stainless steel and is seamless welded construction with a satin finish. The inside of the toilet bowl also has a satin finish. Cabinet interior is sound-deadened with fire-resistant material. There are no accessible voids or crevices where contraband can be concealed.

Lavatory Multi-Sided Bowl is 12-3/4" x 8-1/4" x 5" deep. Standard elbow waste outlet is 1-1/2" O.D. plain end and extends 3" beyond the rear of the fixture.

Optional Valve may be an Air-Control pneumatically operated, pushbutton valve using atmospheric air. Pushbutton is vandal-resistant and requires less than 5 pounds to activate valve. Valve is direct acting, non-metering type and is optionally available as metering with non-hold open feature. Metering valve timing is adjustable from 5 to 60 seconds. Valve includes a 0.5 GPM flow control and can be remotely located up to 10 feet from the operating pushbutton. Valve and bubbler conform with lead free requirements for NSF61, section 9, 1997 and CHSC 116875.

Toilet has an elongated bowl manufactured to ASME A112.19.3-2008 and CSA B45.4-2008 requirements and will flush with a minimum of 25 PSI flow pressure when used in conjunction with a minimum of 1.6 GPF. Trap has a minimum of 3-1/2" seal, and will pass a 2-1/8" ball. Toilet waste outlet is 2-3/8" diameter plain end, and extends beyond the rear of the fixture 11-1/4". Toilet flushing inlet has 1-1/2" NPS male end and extends beyond the rear of the fixture 9-1/2".

Regularly Furnished items include a fast drain, integral raised soap ribs, and mounting hardware for walls up to 8" thick to anchor through fixture slots.

GUIDE SPECIFICATIONS

Provide and install Acorn Penal-Ware® 15" wide Econo Lav-Toilet Comby (specify model number and options). Fixture shall be fabricated from 16 gage, type 304 stainless steel. Construction shall be seamless welded. Countertop shall have raised soap ribs. Provide Air-Control pneumatically operated pushbutton valve. Valve and bubbler conform with lead free requirements for NSF61, section 9, 1997 and CHSC 116875. Toilet shall be concealed blowout jet type with an elongated bowl, a self-draining flushing rim, and an integral contoured seat. Toilet shall meet ASME A112.19.3-2008 and CSA B45.4-2008 requirements and will flush with a minimum of 25 PSI flow pressure when used in conjunction with a minimum of 1.6 GPF. Toilet trap shall have a minimum 3-1/2" seal that shall pass a 2-1/8" diameter ball and be fully enclosed. Cabinet interior is sound-deadened with fire-resistant material. Fixture shall withstand loadings of 1,500 pounds without permanent damage. Fixture shall be furnished with necessary fasteners for proper installation.

Penal-Ware® 1485: 15" Econo Lav-Toilet Comby



WALL THICKNESS AND TYPE (Must Specify)

Thickness: _____ Type: ☐ Concrete ☐ Block ☐ Steel

MODEL AND OPTIONS SELECTION:

BASE MODEL NUMBER

☒ 1485 15" Econo Lav-Toilet Comby

TOILET ORIENTATION (Must Specify)

☐ -AL Angled Left
☐ -AR Angled Right
☐ -CT Centered Toilet

FIXTURE MOUNTING AND WASTE (Must Specify)

☒ -2 On-Floor, Wall Outlet

BUBBLER SELECTION (Must Specify)

☐ -BPH Hemispherical Penal Bubbler (Deck Mounted)

VALVE SELECTION (Must Specify)

☐ -03 Air-Control, Single Temp, Non-Metering
☐ -03-M Air-Control, Single Temp, Metering
☐ -04 Air-Control, H & C, Non-Metering
☐ -04-M Air-Control, H & C, Metering
☐ -MA Manifolded Valve ☐ 2 ☐ 3 ☐ 4
☐ -MH Metering, Hot Side Only

FLUSH VALVE GPF's (Must Specify)

☐ -HET-1.28 GPF
☐ -ULF-1.6 GPF
☐ -3.5 GPF

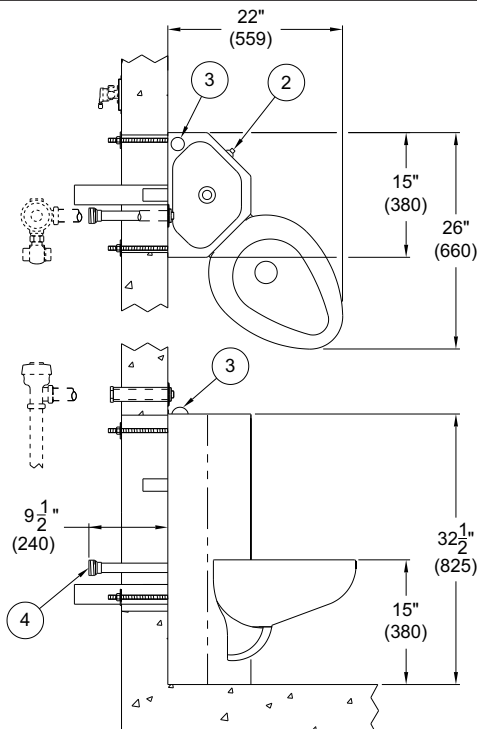
FLUSH VALVE OPTIONS (Must Specify)

☐ -FV Flush Valve, Mechanical
☐ -FVBO Flush Valve by Others
☐ -FVH Flush Valve, Hydraulic

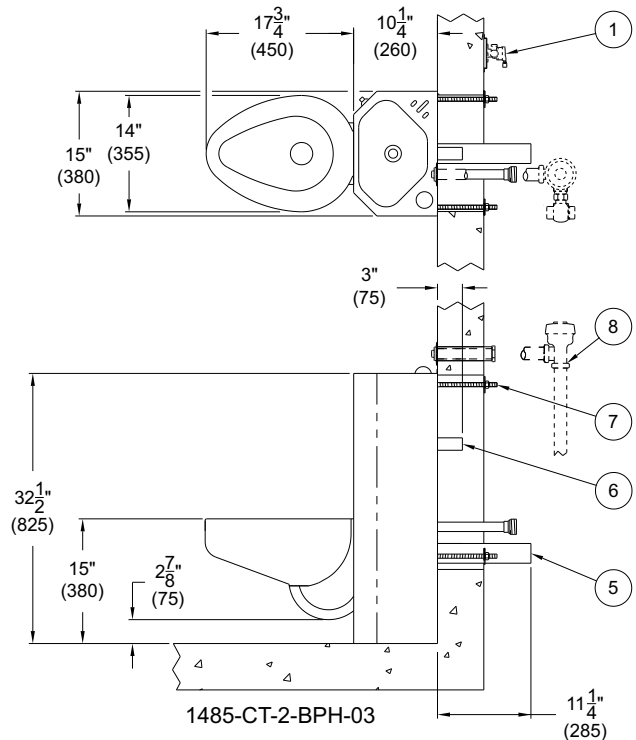
PRODUCT OPTIONS (Must Specify)

☐ -BRS Brass Body Valve
☐ -CO1 Cleanout w/ O-Ring, Connecting to No-Hub 4" (Plain End Only)
☐ -CO1-3 Cleanout w/ O-Ring Connection to No-Hub 3" (Plain End Only, N/A with -W03)
☐ -COH Cleanout Hook Assembly
☐ -CW Combined Waste
☐ -EG Enviro-Glaze, Specify Color: _____
☐ Toilet Exterior Only
☐ Toilet Interior
☐ -FMT Fixture Mounted Trim
☐ -FT Flood-Trol (Manual Reset)
☐ -FTA Flood-Trol Auto-reset
☐ -HET High Efficiency Toilet Design
☐ -HPS High Polished Seat #7 Finish
☐ -HS Hinged Seat
☐ -LW1 Lavy Thru-Wall Extension with P-Trap
☐ -MT Metal Template (Only 1 Required Per Project)
☐ -OF Lavatory Overflow
☐ -PC Pinned Cleanout Plug
☐ -PH Paper Holder ☐ L ☐ R ☐ C ☐ LF ☐ RF
☐ -PT 1-1/2" Removable P-Trap Waste
☐ -SW Wall Sleeve
☐ -TB Tooth Brush Holder ☐ Left ☐ Right
☐ -TH Towel Hook ☐ Single ☐ Double ☐ Left ☐ Right
☐ -TSC Toilet Shipping Cover
☐ -VG1 Vent Grille 5-3/4" x 8-3/4" ☐ Left ☐ Right

Please visit www.acorneng.com for most current specifications.



1485-AL-2-BPH-03 Shown. -AR Opposite.



1485-CT-2-BPH-03

NOTES:

- 03 Air-Control Valve.
- Lavy Valve Pushbutton.
- Lavy Bubbler.
- 1-1/2" NPS Male Flushing Inlet.
- 2-3/8" O.D. Plain End Toilet Waste Outlet.
- Lavy Waste Outlet.
- Wall Mounting Hardware.
- Optional -FV Flush Valve.

<p>Important: Installation instructions and current rough-in are furnished with each fixture. Do not rough in without certified dimensions. Dimensions are subject to manufacturer's tolerance of plus or minus 1/4" and change without notice. Acorn assumes no responsibility for use of void or superseded data. © Copyright 2009 Acorn Engineering Company</p>	
<p>Selection Summary</p> <p>Model No. & Option _____</p> <p>Quantity _____</p>	<p>Approved for Manufacturing</p> <p>Company _____ Title _____</p> <p>Signature _____ Date _____</p>