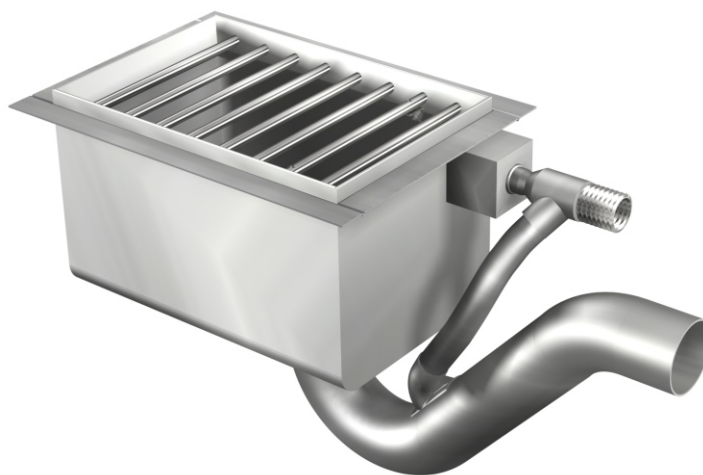




Penal-Ware® 1699 Series

Detox Toilet - Blowout Jet Type - Remote Flushing



1699-W

Fixture May Show Some Available Options

Please visit www.acorneng.com for most current specifications.

Detox Toilet - Blowout Jet Type - Remote Flushing

Recommended for installation in detoxification cells (drunk tanks), padded safety cells, isolation cells and similar locations where conventional toilet may present a hazard to the inmate. Location for toilet should be out of the traffic pattern and as close to the remote located flush valve as practical. Flush valve and a Hot and Cold Hose Box should be mounted in the wall outside the cell. It is recommended that the flush valve be mounted in a flush valve access panel, Acorn model 2898 or flush valve recessed wall box, Acorn model 2803-1 (refer to Dura-Ware Accessories Section for details). Floor should be sloped to drain into the toilet with waste line cleanout provided in the pipe chase.

The exclusive Detox grate design is vandal-resistant and has no sharp edges. Toilet features:

- (1) Welded bars. Removable bar directly over waste outlet is secured with tamper-resistant screws.
- (2) An integral sloping rim which permits solids to be washed into the receptor.
- (3) A receptor with coved corners. Water covers the entire receptor bottom area.
- (4) A continuous flushing rim that washes all four walls with a jet action flush which completely evacuates all solids.

Fixture is fabricated from 14 gage, type 304 stainless steel. Receptor bars are 3/8" diameter. Interior has a matte finish. Toilet has 1" NPT male flushing connection and requires a minimum of 35 PSI flow pressure. Trap will pass a 2-1/8" ball and has a 3-1/2" seal. Toilet waste outlet is 2-3/8" O.D. plain end.

GUIDE SPECIFICATION

Provide and install Acorn Penal-Ware Detox Toilet (specify model number). Fixture shall be fabricated from 14 gage, type 304 stainless steel and shall have a continuous 360 degree washdown flushing rim. Bar grate shall be 3/8" diameter bars welded in place, except bar over waste outlet, which shall be removable and secured in place with two tamper-resistant screws. Receptor shall have coved corners and the bottom area shall maintain a minimum water surface of 8" x 12" x 2" deep. Toilet waste outlet shall be 2-3/8" OD plain end and trap shall pass a 2-1/8" ball.

Penal-Ware® 1699: Blowout Jet Type - Remote Flushing



WALL THICKNESS AND TYPE (Must Specify)

Thickness _____ Type: ☐ Concrete ☐ Block ☐ Steel

MODEL NUMBER AND OPTIONS SELECTION

BASE MODEL NUMBER

☒ 1699 Detox Toilet with Flange

SUPPLY (Must Specify)

☒ -W Wall (Concealed)

FLUSH VALVE GPFs (Must Specify)

☐ -ULF 1.6 GPF

☐ -3.5 GPF

FLUSH VALVE OPTIONS (Must Specify)

Refer to Acorn Dura-Ware Supplementary for Access Panel(s)

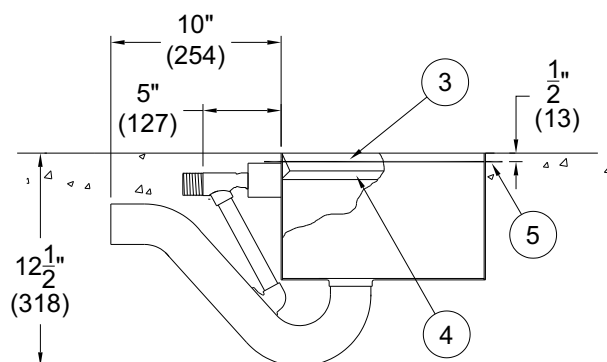
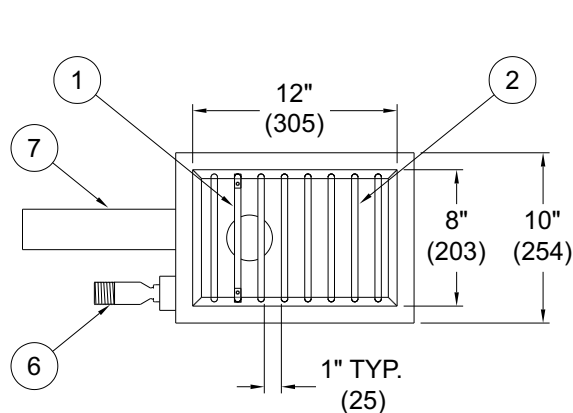
- ☐ -EVSFVElectronic Flush Valve
- ☐ -EVSPFVElectronic Flush Valve w/ Piezo Pushbutton
- ☐ -FV Flush Valve, Mechanical (N/A for ADA)
- ☐ -FVBO Flush Valve by Others
- ☐ -FVH Flush Valve, Hydraulic
- ☐ -MVCFVTime-Trol Flush Valve

PRODUCT OPTIONS (Must Specify)

- ☐ -DLF Detox Less Flange
- ☐ -TF Transformer (Up to 12 Solenoids)
- ☐ -VAC Acorn Vac Systems

Please visit www.acorneng.com for most current specifications.

NOTE: FLUSH VALVE MUST BE NO MORE THAN 144" FROM THE FIXTURE INLET



1699-W

NOTES:

1. REMOVABLE BAR.
2. INTEGRALLY WELDED BARS.
3. SANITARY SLOPING RIM.
4. CONTINUOUS FLUSHING RIM.

5. FINISHING FLANGE.
6. FLUSHING INLET CONNECTION.
7. TOILET WASTE CONNECTION.

Important: Installation instructions and current rough-in are furnished with each fixture. Do not rough in without certified dimensions. Dimensions are subject to manufacturer's tolerance of plus or minus 1/4" and change without notice. Acorn assumes no responsibility for use of void or superseded data. © Copyright 2008 Acorn Engineering Company	
Selection Summary Model No. & Option _____ Quantity _____	Approved for Manufacturing Company _____ Title _____ Signature _____ Date _____