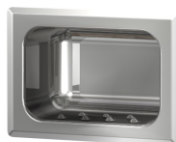




Penal-Ware® 1743 Series

Penal - Wall-Mounted Shower



1743-03-RD

Fixture May Show Some Available Options

Please visit www.acorneng.com for most current specifications.

Penal - Wall-Mounted Shower

Shower components are arranged to be installed on finished wall and serviced from an accessible pipe chase. Backs are provided with anchor tappings, anchor plates and supply connections. Optional Wall Sleeve or Metal Template is recommended for all installations to provide required wall openings. Pushbutton panel is 14 gage, type 304 stainless steel with exterior polished to a satin finish.

Shower Head is chrome plated brass and is vandal-resistant. It projects only 2" from the wall and is tapered to prevent its use as a suicide device. The nozzle is threaded into the body and locked into place by a set screw. The spray pattern can only be changed by the use of an allen wrench inserted through the nozzle.

Valve is a pneumatically operated, pushbutton Air-Control valve using atmospheric air. Pushbutton is vandal-resistant and requires less than 5 pounds to activate valve. Valve is metering, non-hold open type. Valve timing is adjustable from 5 to 60 seconds. Valve includes a 2.5 GPM flow control and can be remotely located up to 10 feet from the operating pushbutton. Valve conforms with lead free requirements of NSF61, Section 9, 1997.

Regularly Furnished items include a metering Air-Control valve, a shower head, and rust-resistant mounting hardware for walls up to 8" thick.

GUIDE SPECIFICATION

Provide and install Acorn Penal - Wall-Mounted Shower (specify model number and options). Shower components shall be provided with anchor tappings, anchor plates, and supply connections. Pushbutton panel shall be 14 gage, type 304 stainless steel polished to a satin finish. All other trim shall be chrome plated. Shower valve shall be Air-Control, metering, non-hold open type. Components shall be furnished with all necessary fasteners and plate for proper installation.



Penal-Ware®: 1743 Penal - Wall-Mounted Shower

WALL THICKNESS AND TYPE (Must Specify)

Thickness _____ Type: Concrete Block Steel

MODEL NUMBER AND OPTIONS SELECTION

BASE MODEL NUMBER

1743 Penal Wall-Mounted Shower

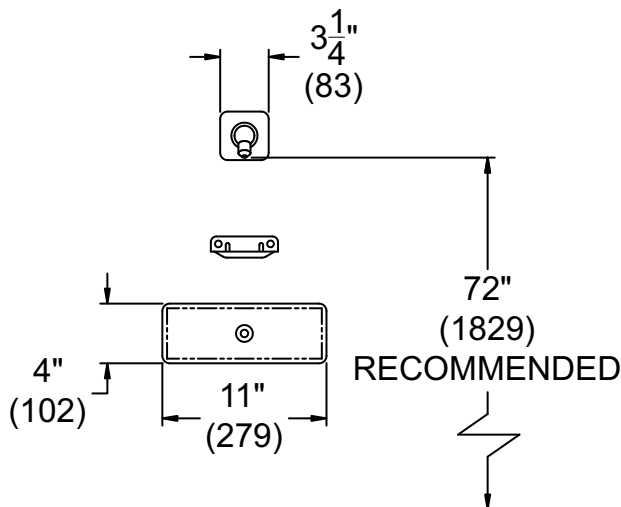
VALVE SELECTION (Must Specify)

- 03 Air-Control, Single Temperature
- 04 Air-Control, H & C
- EVS1 Electronic Valve System - Single Temp
- EVSP1 Electronic Valve Sys. w/ Piezo Pushbutton
- EVS2 Electronic Valve System - Hot & Cold
- EVSP2 Electronic Valve Sys. w/ Piezo Pushbuttons
- MVC1 Time-Trol - Single Temp
- MVC2 Time-Trol - Hot & Cold
- PPZ1 Programmable Piezo Button - Single Temp
- PPZ2 Programmable Piezo Button - Hot & Cold

Product Options

- BRS Brass Body Valve
- CSH Conical Shower Head
- D Soap Dish
- EG Enviro-Glaze, Specify Color: _____
- F Flow Control, Must Specify; (Showerhead Only)
 - 1.4 GPM 1.6 GPM 2.0 GPM
- MA Manifolded Valve __ 2
- MT Metal Template (Only 1 Required Per Project)
- PBH Hemispherical Pushbutton
- PYY Penal Lockable Universal Ball Joint
- PZZ Penal Lockable Up-Down Ball Joint
- RD Recessed Soap Dish
- SW Wall Sleeve
- TF 120VAC To 24VAC Transformer (MVC option only)

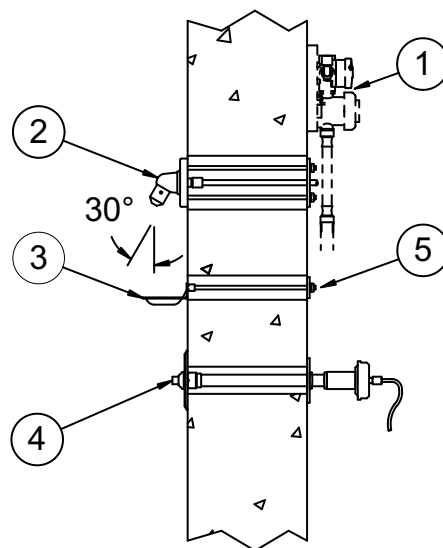
Please visit www.acorneng.com for most current specifications.



1743-03-D

NOTES:

1. Optional -03 Air-Control Valve.
2. Flanged Penal Shower Head.
3. Optional -D Surface Mounted Soap Dish.



4. Penal Pushbutton.
5. Wall Mounting Hardware.

Important: Installation instructions and current rough-in are furnished with each fixture. Do not rough in without certified dimensions. Dimensions are subject to manufacturer's tolerance of plus or minus 1/4" and change without notice. Acorn assumes no responsibility for use of void or superseded data. © Copyright 2006 Acorn Engineering Company	
<p style="text-align: center;">Selection Summary</p> <p>Model No. & Option _____</p> <p>Quantity _____</p>	<p style="text-align: center;">Approved for Manufacturing</p> <p>Company _____ Title _____</p> <p>Signature _____ Date _____</p>