



## Replace-Ware® 3315 Series 15" Lav-Toilet Comby - Replacement



3315-CT-2-BP-04

3315-AL-2-BP-04-PH

Fixture May Show Some Available Options

Please visit [www.acorneng.com](http://www.acorneng.com) for most current specifications.

### 15" Lav-Toilet Comby - Replacement

**Acorn 3315 Lav-Toilet Comby** is designed to replace a variety of existing aluminum combination fixtures, including but not limited to the following Aluminum Plumbing Fixture Corp. (Super Secur) model numbers. For replacement of existing stainless steel combinations, contact the Acorn factory.

**OFF-FLOOR, WALL OUTLET:** A-350, M-350, SA-350, SA-350-DW.

**ON-FLOOR, WALL OUTLET:** A-150, A-154, A-157, M-150, M-154, SA-150, SA-150-DW.

**ON-FLOOR, FLOOR OUTLET:** A-150F, A-151F, A-152F, M-150F, M-151F, M-152F.

**Fixture** is arranged to be installed on finished wall and serviced from an accessible pipe chase.

**Cabinet and Toilet Bowl** are fabricated from 14 gage, type 304 stainless steel and is seamless welded construction with a satin finish. The inside of the toilet bowl has a matte finish. Cabinet interior is sound-deadened with fire-resistant material. There are no accessible voids or crevices where contraband can be concealed.

**Lavatory Bowl.** Standard Multi-Sided Bowl is 12-3/4" x 8-1/4" x 5" deep. Standard elbow waste outlet is 1-1/4" NPT female.

**Lavatory Valve,** when specified, is arranged to support the fixture through the wall and serviceable from the chase. Valve is an Air-Control pneumatically operated, pushbutton valve using atmospheric air. Pushbutton is vandal-resistant and requires less than 5 pounds to activate valve. Valve is direct acting, non-metering type and is optionally available as metering with non-hold open feature. Metering valve timing is adjustable from 5 to 60 seconds. Valve includes a 0.5 GPM flow control and can be remotely located up to 10 feet from the operating pushbutton. Valve and bubbler conform with lead free requirements for NSF61, section 9, 1997 and CHSC 116875.

**Toilet** is blowout jet type with elongated bowl manufactured to ASME A112.19.3-2008 and CSA B45.4-2008 standards. Toilet requires a minimum of 25 PSI flow pressure and uses a minimum water consumption of 1.28 GPF. Trap has a minimum 3-1/2" seal and will pass a 2-1/8" ball. Toilet waste outlet is a gasketed waste.

**Regularly Furnished** items include a fast drain, integral raised rib soap holder, and 1-1/4" elbow waste outlet.

#### GUIDE SPECIFICATION

Provide and install Acorn Replace-Ware 15" wide Lav-Toilet Comby (specify model number and options). Cabinet and toilet bowl shall be fabricated from 14 gage, type 304 stainless steel. Construction shall be seamless welded and exposed surfaces shall have a satin finish. Countertop shall have an air-circulating, raised rib soap holder. Toilet shall be concealed blowout jet type with an elongated bowl, a self-draining flushing rim and an integral contoured seat. Toilet shall be ASME A112.19.3-2008 and CSA B45.4-2008 compliant. Toilet requires a minimum of 25 PSI flow pressure and uses a minimum water consumption of 1.28 GPF. Toilet trap shall have a minimum 3-1/2" seal that shall pass a 2-1/8" diameter ball and be fully enclosed. Cabinet interior is sound-deadened with fire-resistant material. No fasteners are provided.

# Replace-Ware®: 3315 15" Lav-Toilet Comby - Replacement



## WALL THICKNESS AND TYPE (Must Specify)

Thickness: \_\_\_\_\_ Type: ☐ Concrete ☐ Block ☐ Steel

## MODEL AND OPTIONS SELECTION:

### BASE MODEL NUMBER

☒ -3315 15" Lav-Toilet Comby-Replacement

### TOILET ORIENTATION (Must Specify)

- ☐ -AL Angled Left  
☐ -AR Angled Right  
☐ -CT Centered Toilet

### FIXTURE MOUNTING AND WASTE (Must Specify)

- ☐ -1 Off-Floor, Wall Outlet  
☐ -2 On-Floor, Wall Outlet  
☐ -3 On-Floor, Floor Outlet

### BUBBLER SELECTION (Must Specify)

- ☐ -BC Bubbler, Code  
☐ -BP Bubbler, Penal  
☐ -BPH Hemispherical Penal Bubbler  
☐ -LF Lav-Filler

### VALVE SELECTION (Must Specify)

- ☐ -03 Air-Control, Single Temp, Non-Metering  
☐ -03-M Air-Control, Single Temp, Metering  
☐ -04 Air-Control, H & C, Non-Metering  
☐ -04-M Air-Control, H & C, Non-Metering  
☐ -9 Punched for Valve by Others (Specify Punching)  
☐ -EVS1 Electronic Valve System - Single Temp  
☐ -EVS2 Electronic Valve System - Hot & Cold  
☐ -MA Manifolded Valve ☐ 2 ☐ 3 ☐ 4  
☐ -MH Metering, Hot Side Only  
☐ -MVC1 Time-Trol - Single Temp  
☐ -MVC2 Time-Trol - Hot & Cold  
☐ -PPZ1 Programmable Piezo Button - Single Temp  
☐ -PPZ2 Programmable Piezo Button - Hot & Cold

### FLUSH VALVE GPF's (Must Specify)

☐ -HET 1.28 GPF ☐ -ULF 1.6 GPF ☐ -3.5 GPF

### FLUSH VALVE OPTIONS (Must Specify)

- ☐ -EVSFV Master-Trol Flush Valve  
☐ -FV Flush Valve  
☐ -FVBO Flush Valve by Others  
☐ -FVH Flush Valve Hydraulic  
☐ -MVCFV Time-Trol Flush Valve

## PRODUCT OPTIONS (Must Specify)

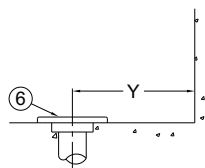
- ☐ -BRS Brass Body Valve  
☐ -CI Cycle Interrupt for Time-Trol Valves  
☐ -CO1 Cleanout w/O-Ring, Connecting to No-Hub 4" (-PE Only)  
☐ -CO1-3 Cleanout w/O-Ring, Connecting to No-Hub 3" (-PE Only, N/A with -WO3)  
☐ -COH Cleanout Hook Assembly  
☐ -CW Combined Waste  
☐ -EG Enviro-Glaze, Specify Color: \_\_\_\_\_  
☐ Toilet Exterior Only  
☐ Toilet Interior  
☐ -FMT Fixture Mounted Trim  
☐ -FT Flood-Trol, Manual Reset  
☐ -FTA Flood-Trol, Auto-reset  
☐ -FTE Flood-Trol, Electronic  
☐ -FVT Flush Valve Thru Wall Connector  
☐ -HET High Efficiency Toilet Design  
☐ -HPS High Polish Seat #7 Finish  
☐ -HS Hinged Seat Open Front Less Cover  
☐ -IS Integral Shelf  
☐ -LW1 Lavy Thru-Wall Extension with P-Trap  
☐ -LWE Lavy Waste Extension (3" Standard)  
Specify Length Beyond Fixture: \_\_\_\_\_  
☐ -OF Lavatory Overflow  
☐ -OS Outlet Size 1-1/2" NPT Lavy Waste in Lieu of Standard 1-1/4" NPT  
☐ -PBH Hemispherical Pushbutton  
☐ -PC Pinned Cleanout Plug  
☐ -PE Plain End Waste Connection  
☐ -PH Paper Holder ☐ L ☐ R ☐ C  
☐ -PT P-Trap Waste  
☐ -SPS Suicide Prevention Skirt  
☐ -TB Toothbrush Holder ☐ Left ☐ Right  
☐ -TF Transformer, 120VAC to 24VAC  
☐ -TG 12 Gage Cabinet  
☐ -TH Towel Hook ☐ Left ☐ Right  
☐ -TSC Toilet Shipping Cover  
☐ -TWE Toilet Waste Extension (3" Standard)  
Specify Length Beyond Fixture: \_\_\_\_\_  
☐ -VG1 Vent Grille, 5-3/4" x 8-3/4" ☐ Left ☐ Right  
☐ -VG2 Vent Grille, 8-3/4" x 13" (-1 Models Only)

## NOTES:

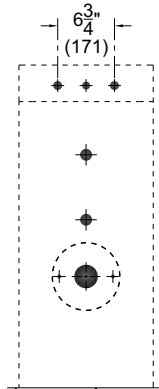
1. Pushbutton Valve Assembly Location (Anchors Top of - Fixture).
2. Lavy Waste Outlet Location.
3. Flushing Inlet Location.
4. Gasketed Waste Outlet.
5. Carrier Bolt Pattern (-1 Models).
6. -3 On-Floor, Floor Outlet Detail.

Please visit [www.acorneng.com](http://www.acorneng.com) for most current specifications.

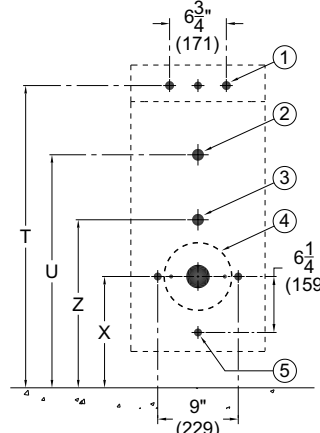
| WALL OPENINGS<br>(Required for all units) |  |
|---|--|
| T   |  |
| U   |  |
| X   |  |
| Z   |  |
| Y   |  |



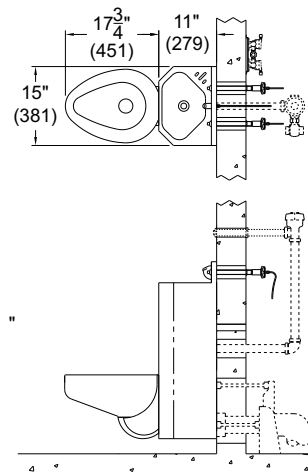
3315-CT-3  
FLOOR WASTE OUTLET  
SIDE VIEW



3315-CT-2  
ROUGH-IN VIEW  
(FIXTURE SIDE)



3315-CT-1  
ROUGH-IN VIEW  
(FIXTURE SIDE)



3315-CT-1-BP-4

**Important:** Installation instructions and current rough-in are furnished with each fixture. Do not rough in without certified dimensions.

Dimensions are subject to manufacturer's tolerance of plus or minus 1/4" and change without notice. Acorn assumes no responsibility for use of void or superseded data. © Copyright 2009 Acorn Engineering Company

## Selection Summary

Model No. & Option \_\_\_\_\_  
 Quantity \_\_\_\_\_

## Approved for Manufacturing

Company \_\_\_\_\_ Title \_\_\_\_\_  
 Signature \_\_\_\_\_ Date \_\_\_\_\_