



Whitehall
Manufacturing™

Care-Ware® Bedside Patient
Care Units

A MEMBER OF
MORRIS GROUP
INTERNATIONAL

Whitehall Free-Standing Swivette™

Includes Models
4010, 4012, 4015



4010-L-1-CNCT

Fixture May Show Some Available Options

Cabinet exterior surfaces are high pressure laminate. Interior surfaces are stain-resistant melamine laminate and stainless steel. Interior has a removable stainless steel floor to conceal frame anchors. Specify cabinet color selection.

Counter has a 3" backsplash and a bullnose front edge. Surface is high pressure laminate. Specify counter color selection.

Lavatory is heavy gage, type 304 stainless steel, self-rimmed, furnished with P-trap and wall flange. Lavatory is always located on the opposite side of the toilet.

Lavatory Valve is a deck-mounted, hot and cold mixing valve with wrist blade handles and a 10" rigid gooseneck and conforms with CHSC 118675 lead free requirements.

Toilet is stainless steel, siphon jet type with white plastic seat and self-sustaining check hinge. Door linkage swivels the toilet into the room when cabinet door is opened. The toilet is locked in place when open and must be unlatched to close. Toilet operates with a 1.6 GPF flush valve.

Hydraulic Flush Valve is furnished standard with a 1-3/4" diameter, hydraulically actuated, remote pushbutton. Minimum required flow pressure is 25 PSI with a minimum water consumption of 1.28 GPF.

Swivel Assembly is cast iron with a sanitary white Enviro-Glaze finish, and has a positive watertight, chemical-resistant seal. Swivel assembly requires floor anchoring by others. Toilets will withstand a 2,500 pound static vertical load.

Floor Anchors are seismic rated for CBC category IV structures.

Optional Bedpan Washer mounts in lieu of the storage compartment and includes a handheld bedpan washer with volume control, positive shut-off and stainless steel hose. **An elevated pressure type vacuum breaker by others is recommended with this selection to prevent backflow or siphonage from occurring and possibly contaminating the water supply. Consult local codes for back flow prevention device requirements.**

GUIDE SPECIFICATION

Provide and install Whitehall Swivette™ (specify model number and options). Cabinet frame shall be heliarc welded, type 304 stainless steel, and shall not require wall support. Cabinet doors and panels shall be high pressure laminate. Door on toilet side shall be linked to toilet, so that when door is opened or closed, the toilet will swivel accordingly. Door on lavatory side shall be provided with a toilet paper holder. Doors shall support a 250 pound static, vertical load. Front panels shall hinge open for access to valves and piping. Bedpan storage cupboard shall be provided above the toilet. Cabinet shall provide front toe space. Counter shall be high pressure laminate with a 3" backsplash and bullnose front. Lavatory bowl shall be heavy gage, type 304 stainless steel, self-rimmed, rectangular type, 9-1/2" x 14-1/2" x 6" deep. P-trap shall be furnished. Toilet shall be stainless steel, elongated, siphon jet type, and shall flush in any position along the arc of movement. Trap shall pass a 2-1/8" ball. Toilet shall withstand loadings of 2,500 pounds without permanent damage. Toilet seat shall have self-sustaining check hinge. Toilet to flush with a 1.6 GPF flush valve.

Please visit www.whitehallmfg.com
for most current specifications.



Member of
U.S. Green
Building
Council



Recyclable
Product



Water
Conserving
Product

Complies
with the
following
standards:
CHSC
118675





Whitehall Manufacturing™

Care-Ware® Bedside Patient Care Units

MODEL NUMBER AND OPTIONS SELECTION

BASE MODEL NUMBER (Must Specify)

- ☐ 4010 Swivette™ Free-Standing, Back Wall Waste Outlet
- ☐ 4012 Swivette™ Free-Standing, Side Wall Waste Outlet
- ☐ 4015 Swivette™ Free-Standing, Floor Waste Outlet

Note: Side wall outlet is only available on the toilet side of fixture.

TOILET ORIENTATION (Must Specify)

- ☐ -L Left Hand Toilet ☐ -R Right Hand Toilet

Notes: L (Left) or R (Right) indicates toilet location in opened position when facing the fixture. Lavy is always located on side opposite the toilet.

BACKSPLASH/CABINET ORIENTATION (Must Specify)

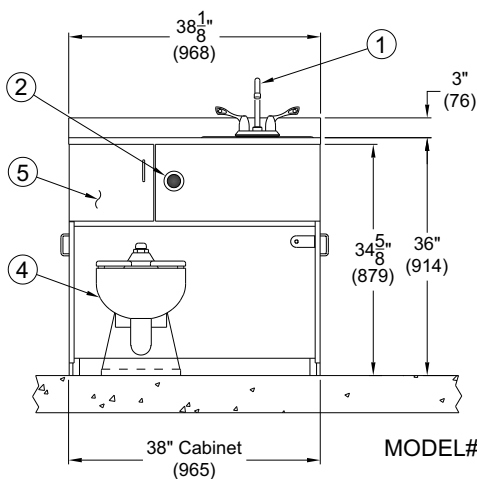
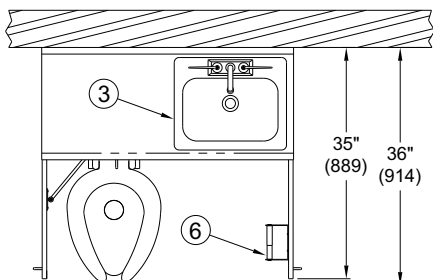
- ☐ -1 Back Wall Only (One Wall)
- ☐ -2 Right Hand Corner (Two Wall)
- ☐ -3 Left Hand Corner (Two Wall)
- ☐ -4 Alcove (Three Wall)

FLUSH VALVE SELECTION

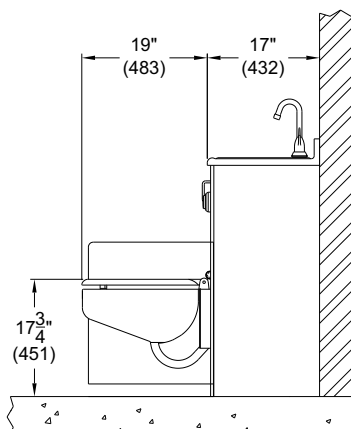
- ☐ -HET - 1.28 GPF
- ☐ -ULF - 1.6 GPF
- ☐ -3.5 GPF

COLOR SELECTION (Must Specify)

Countertop _____ Cabinet _____



MODEL# 4010/4015-L-1 Series



NOTES:

1. Lavatory Gooseneck Faucet
2. Flush Valve Pushbutton
3. Stainless Steel Lavatory
4. Stainless Steel Toilet
5. Storage Compartment
6. Toilet Tissue Holder

PRODUCT OPTIONS (Must Specify)

- ☐ -AE Aerator (on Gooseneck Spout)
- ☐ -BAT-SO Battery Operated (-SO)
- ☐ -BL Bedpan Lugs
- ☐ -BW Bedpan Washer (Built-In)
- ☐ -CCL Corterra® Solid Surface Countertop w/ Integral Lavy, Specify Color: _____
 - ☐ AMA Anti-Microbial Additive
- ☐ -CCT Corterra® Solid Surface Countertop Specify Color: _____
 - ☐ AMA Anti-Microbial Additive
- ☐ -CNCT Corian® Countertop w/ Stainless Steel Lavy
- ☐ -CNCTL Corian® Countertop w/ Integral Contrasting Colored Lavy Bowl
- ☐ -CS Stainless Steel Countertop w/ Integral Lavy
- ☐ -DB1 Hemo-Dialysis Box, Single Valve
- ☐ -DB2 Hemo-Dialysis Box, Dual Valve
- ☐ -EC Extended Countertop Specify Length: _____
- ☐ -EG Enviro-Glaze: Specify Color: _____
 - ☐ Lavy ☐ Cabinet Interior
 - ☐ Toilet Exterior Only ☐ Toilet Interior & Exterior
- ☐ -EP Exposed Paper Holder
- ☐ -FCI Infectious Control Flush with Exposed Paper Holder
- ☐ -LCT Less Countertop, Furnish Lavy & Valve
- ☐ -LCTL Less Countertop & Lavy, Furnish Valve
- ☐ -LCTLV Less Countertop, Lavy & Valve
- ☐ -LFN Laminar Flow Nozzle
- ☐ -LLV Less Lavy & Valve, Furnish Countertop
- ☐ -LS Lavatory Hose Spray
- ☐ -LV Less Valve, Furnish Countertop & Lavy
- ☐ -MT Metal Template
- ☐ -OCP Optional Color Plastic Panels Specify Color: _____
- ☐ -OCR Optional Color Resin Countertop Specify Color: _____
 - ☐ AMA Anti-Microbial Additive
- ☐ -SF Special Finish Specify Color: _____
- ☐ -SO Sensor Operated Valve
- ☐ -SS Storage Shelf
- ☐ -SUG Swing Up Grab Bar
- ☐ -VF Concealed H & C Foot Pedal Operated Air-Control Valve
- ☐ -W03 3" Waste Outlet

All dimensions are nominal and subject to manufacturer's change without notice. Whitehall assumes no responsibility for use of void or suspended data. © Whitehall Manufacturing, Member of Morris Group International. Please visit www.whitehallmfg.com for most current specifications.

SELECTION SUMMARY & APPROVAL FOR MANUFACTURING

Model Number & Options _____ Quantity _____
Company _____ Date _____
Contact _____ Title _____
Approval for Manufacturing/Signature _____