

A172-UG Series

MODEL A172100F-UG

BARRIER FREE, UNIVERSAL BI-LEVEL,
WALL MOUNTED DRINKING FOUNTAIN

STANDARD FEATURES

- Child or Adult ADA Compliant (When Properly Installed)
- Universal Bi-Level - Can Be Installed Left Unit High Or Right Unit High With No Additional Parts Required
- Apron and One-Piece Bottom Wrapper is Satin Finish Or Gray Powder Coat Finish
- Flexible, Low Flow, Anti-Rotation, Non-Squirt Bubbler
- 100-Mesh Inlet Strainer
- Hanging Bracket Provided
- Auto-Stop Allows Service of Cartridge And Strainer Without Shutting Off Water Supply
- Rough-Ins Match Other Manufacturer's for Easy Replacement

SUGGESTED SPECIFICATIONS

Model A172100F-UG is a self-contained, Bi-Level Drinking Fountain. Unit shall be activated from a Pushbutton in the front, using less than 5 pounds of force. Bubblers shall deliver 0.3 GPM flow, have a Flexible Guard with an integrally designed non-squirt feature and operate on a water pressure range of 20-105 PSIG. Basins shall be constructed from 304 Stainless Steel and have an Integral Drain. Cabinets shall be either Galvanized or Galvannealed Steel with Gray Powder Coat Finish or Stainless Steel with Satin Finish. Unit is certified to ANSI A117.1, Public Law 111-380 (NO-LEAD), CHSC 116875 and NSF/ANSI 61, Section 9. Fixture meets ADA, ADA Standing Person, and ADA Child requirements when mounted appropriately.



"RATED FOR INDOOR USE"

MODEL:

(Must Specify)

FLEXIBLE BUBBLER

- ☐ A172100F-UG Gray Finish (Standard, Shown)
- ☐ A172400F-UG Satin Stainless Finish

STAINLESS STEEL BUBBLER

- ☐ A172100S-UG Gray Finish
- ☐ A172400S-UG Satin Stainless Finish

OPTIONS

(additional costs may apply)

- ☐ -CSC6 Concealed Support Carrier
- ☐ -DD Drop Down Door (with -WF1 Only)
- ☐ -SK5 Skirt Kit for upper unit
- ☐ -WF1 1500-Gallon Capacity, NSF 42+53, 1-Micron Lead Reduction Filter
- ☐ -WF3 3000-Gallon Capacity, NSF 42+53, 1-Micron Lead Reduction Filter

Complies with the following standards:



NSF/ANSI 61



Federal Public Law 111-380 (No Lead)



Member of U.S. Green Building Council



Recyclable Product



Water Conserving Product

WARNING: Cancer and Reproductive Harm - www.P65Warnings.ca.gov

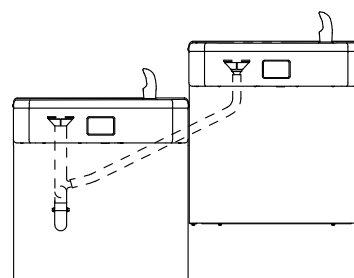
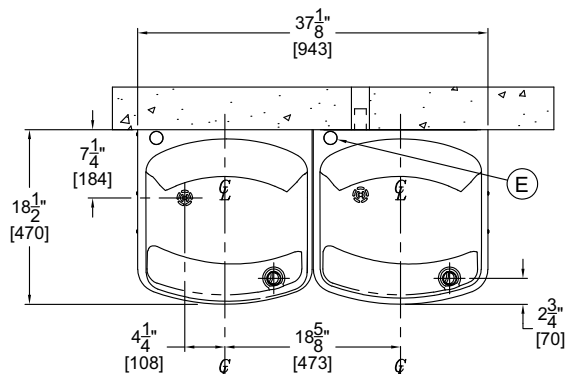
MURDOCK MFG. • 15125 Proctor Avenue • City of Industry, CA 91746 USA
Phone 800-453-7465 or 626-333-2543 • Fax 626-855-4860 • www.murdockmfg.com

Member of **MORRIS GROUP INTERNATIONAL**

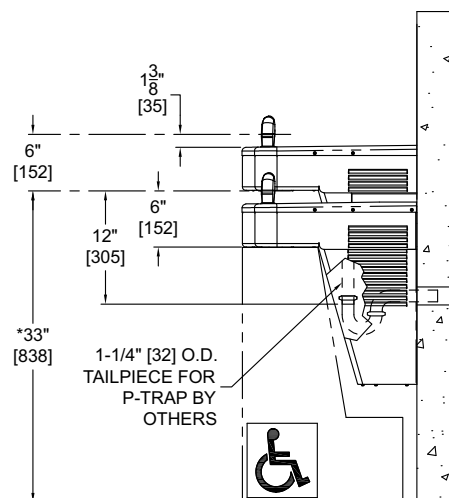
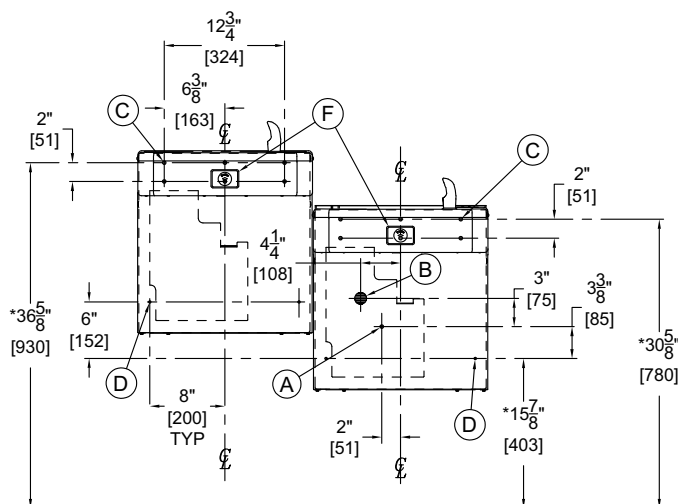
A172-UG Series

MODEL A172100F-UG

BARRIER FREE, UNIVERSAL BI-LEVEL,
WALL MOUNTED DRINKING FOUNTAIN



ALTERNATE MOUNTING
CONFIGURATION



GENERAL NOTES:

1. ALL DIMENSIONS ARE IN INCHES [MM]
2. ALLOW 4 INCHES [102MM] MINIMUM CLEARANCE PER SIDE FOR VENTILATION
- *3. DIMENSIONS SHOWN ARE FOR ADA ADULT HEIGHT. ADJUST VERTICAL DIMENSIONS AS NECESSARY TO COMPLY WITH FEDERAL, STATE & LOCAL CODES
4. STOP VALVE & P-TRAP NOT SUPPLIED
5. IMPORTANT: COOLERS MUST BE ATTACHED TO WALL WITH APPROPRIATE ANCHOR SCREWS

- A. 3/8" O.D. SUPPLY INLET
- B. WASTE OUTLET FOR P-TRAP BY OTHERS FOR PROVIDED 1-1/4" O.D. TAILPIECE
- C. Ø3/8" HANGER BRACKET PUNCHING, 6 PLACES ON EACH FIXTURE FOR ANCHORING HARDWARE BY OTHERS
- D. Ø1/4" PUNCHING, 2 PLACES ON EACH FIXTURE FOR ANCHORING HARDWARE, BY OTHERS
- E. REMOVABLE PLUG FOR BOTTLE FILLER
- F. PUSHBUTTON CARTRIDGE

Murdock Mfg.™ warrants that its products are free from defects in material or workmanship under normal use and service for a period of one year from date of shipment. Murdock's liability under this warranty shall be discharged solely by replacement or repair of defective material, provided Murdock™ is notified in writing within one year from date of shipment, F.O.B. Industry, California.

SELECTION SUMMARY & APPROVAL FOR MANUFACTURING	Model Number & Options _____	Quantity _____	<p>All dimensions are subject to manufactures tolerance of plus or minus 1/2" nominal and subject to change without notice. Murdock assumes no responsibility for use of void or superseded data. Dimensions may change with the addition of optional accessories. Murdock Mfg.™, Member of Morris Group International™. Please visit www.murdockmfg.com for most current specifications.</p>
	Company _____		
	Contact _____	Title _____	
	Signature (Approval for Manufacturing) _____		
	Date _____		