



ELECTRIC TANKLESS WATER HEATER - POINT OF USE

INSTANT-FLOW® MICRO - STANDARD FLOW

APPLICATION: commercial, industrial, residential, kitchen/bar sink, service sink, scrub sink, shower

PRODUCT FEATURES

- Uses a digital microprocessor for temperature control
Ultra quick response times for temperature variations - 120 times per second. Microprocessor use is the most energy efficient means of heating water
- Unlimited hot water
- Saves water and energy - 99% energy efficient
- Vandal resistant rugged cast aluminum housing
- Space saving compact size:
6-1/4" (H) x 9-5/8" x 2-3/4"
(159 (H) x 244 x 70mm)
- Meets applicable building codes including ADA, UL, IAPMO, UPC, CSA.
- Environmentally friendly
- Made in the U.S.A.
- Field Adjustable Temperature 104-125°F (40-52°C) (Option -ADJ)

Chronomite Instant-Flow® Micro - Standard Flow models are manufactured to provide reliable point-of-use hot water. There is no pressure and temperature relief valve needed (unless required by code), saving time and money on installation.

Housing is fabricated from rugged cast aluminum alloy.

Element assembly is fabricated from Celcon plastic.

Heating coils are nichrome.

Faucet flow controls are supplied with each unit. 3/8" compression fittings are supplied (standard). Optional 1/2" and 3/4" male NPT water connections available.



Member of
U.S. Green
Building Council



Water
Conserving
Product



Made in
the USA

For the model being selected, please place the corresponding amps and volts values in the Guide Specifications to the right.



Instant-Flow® Micro - Standard Flow

GUIDE SPECIFICATION

Tankless Water Heater shall be a Chronomite Laboratories Model

M - /
 AMPS VOLTS

OPTIONS

with Amps and Volts

to heat to a preset temperature of:

☐ 104°F (40°C) ☐ 110°F (43°C) ☐ Other temperature settings available upon request (specify below)

☐ 120 °F (49°C)
(Meets health code)

Unit shall be provided with Celcon waterways, and Nichrome heating coils.

Temperature controlled by microprocessor.

OPTIONS

- ☐ PA 765 ABS Housing (P)
- ☐ Satin Finish Stainless Steel Housing (SS)
- ☐ High Polish Finish Stainless Steel (SSP)
- ☐ Pressure & Temp Relief Valve Assembly (TP)
- ☐ 1/2" Male NPT (NPT08)
- ☐ High Flow - 3/4" Male NPT (NPT12)
- ☐ Field Adjustable Temperature (ADJ)
- ☐ Disconnect Switch, Rotary 40A - Lockable Nema 4X (2095-1)

MODEL	AMPS	VOLTS	WATTS	ACTIVATION GPM	°F TEMPERATURE RISE @		
					1.00 GPM	1.50 GPM	2.00 GPM
M-30/208	30	208	6240	0.65	43	28	21
M-30/240	30	240	7200	0.65	49	33	25
M-30/277	30	277	8310	0.65	57	38	28
M-40/208	40	208	8320	0.65	57	38	28
M-40/240	40	240	9600	0.65	66	44	33
M-40/277	40	277	11080	0.65	76	50	38

Complies with Standards for:

LISTED TO:
UL STD 499

CERTIFIED TO:
CAN/CSA STD C22.2 NO. 98



Federal
Public Law
111-380
(No Lead)

Intertek
5001365

CHRONOMITE LABORATORIES, INC.

17451 Hurley St. :: City of Industry, CA 91744
Phone 800-447-4962 :: 626-937-4270
Fax 626-937-4279 :: www.chronomite.com

MEMBER OF



INSTANT-FLOW® MICRO - STANDARD FLOW

INSTANT-FLOW® MICRO - STANDARD FLOW METRIC CHART

MODEL	AMPS/PHASE	1 Ø VOLTAGE	WATTS	ACTIVATION LPM	°C TEMPERATURE RISE @		
					4.00 LPM	6.00 LPM	8.00 LPM
M-30/208	30	208	6240	2.5	22	15	11
M-30/240	30	240	7200	2.5	26	17	13
M-30/277	30	277	8310	2.5	30	20	15
M-40/208	40	208	8320	2.5	30	20	15
M-40/240	40	240	9600	2.5	34	23	17
M-40/277	40	277	11080	2.5	40	27	20

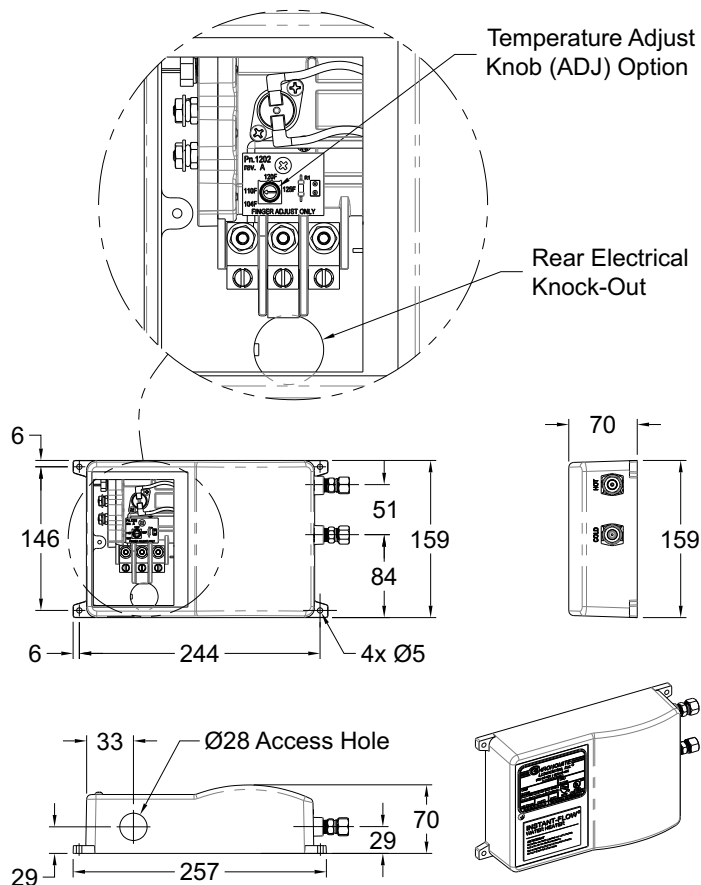
TECHNICAL DIMENSIONS

INSTANT-FLOW® MICRO - STANDARD FLOW

Dimensions:	159 (H) x 244 x 70mm
Weight:	2.27 Kg
Materials:	Rugged cast aluminum housing Celcon plastic element assembly with nichrome coils
Housing Color:	White
Minimum Operating Flow Rate:	2.5 LPM
Minimum Operating Pressure:	172 kPa
Maximum Operating Pressure:	552 kPa
Maximum Pressure:	1034 kPa
Maximum Water Temperature:	71°C
Maximum Ambient Operating Temperature:	60°C
Listing:	UL, IAPMO, UPC, ADA, ETL

GENERAL NOTES:

- The microprocessor adjusts the heater's power for variations in flow rates, inlet water temperature and pressure to assure the selected factory preset water temperature.
- 240V models when operated at 220V will have approximately a 15% wattage decrease.
- 120V models when operated 110V will have approximately a 15% wattage.
- Factory setting of 43°C or above require cold water mixing at the hand wash faucet.
- Microprocessor limits temperature increase according to the pre-selected temperature.
- M40/277 not certified to CAN/CSA STD C22.2 No. 88



Chronomite Laboratories assumes no responsibility for use of void or suspended data. © Copyright Chronomite Laboratories, Inc.
 Member of Morris Group International, City of Industry, CA Please visit www.chronomite.com for most current specifications.

SELECTION SUMMARY
& APPROVAL FOR
MANUFACTURING

Company _____	Quantity _____
Model Number & Options _____	
Contact _____	Title _____
Signature (Approval for Manufacturing) _____	Date _____

CHRONOMITE
 LABORATORIES, INC.

PH. 800-447-4962
 626-937-4270
 FAX 626-937-4279
www.chronomite.com



ELECTRIC TANKLESS WATER HEATER - POINT OF USE

INSTANT-FLOW® MICRO - STANDARD FLOW

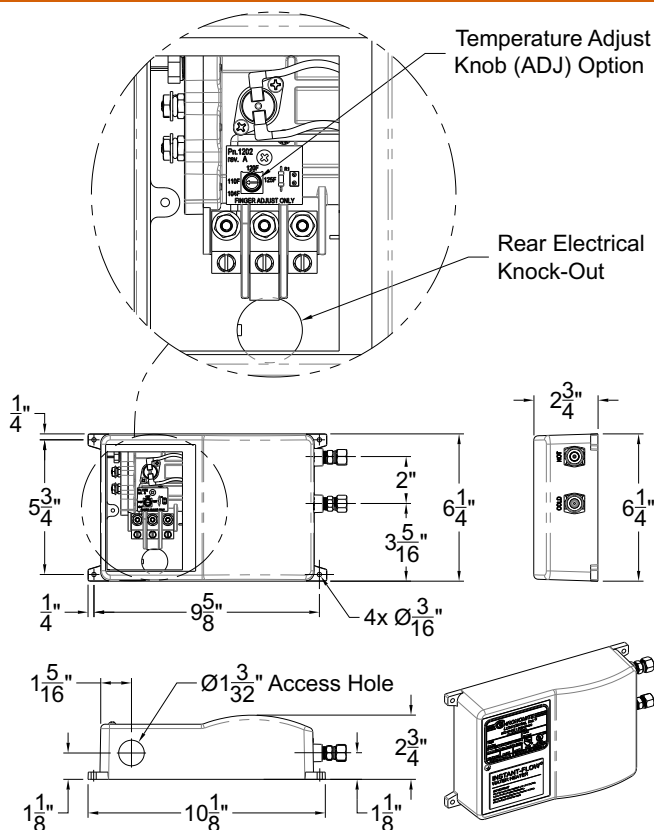
TECHNICAL DIMENSIONS

INSTANT-FLOW® MICRO - LOW FLOW

Dimensions:	6-1/4" (H) x 9-5/8" x 2-3/4"
Weight:	5 lbs.
Materials:	Rugged cast aluminum housing Celcon plastic element assembly with nichrome coils
Housing Color:	White
Minimum Operating Flow Rate:	0.65 GPM
Minimum Operating Pressure:	25 PSI
Maximum Operating Pressure:	80 PSI
Maximum Pressure:	150 PSI
Maximum Water Temperature:	160°F
Maximum Ambient Operating Temperature:	140°F
Listing:	UL, IAPMO, UPC, ADA, ETL

GENERAL NOTES:

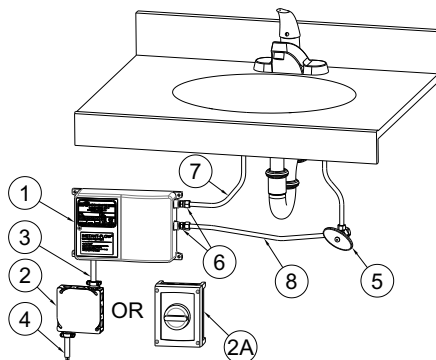
- The microprocessor adjusts the heater's power for variations in flow rates, inlet water temperature and pressure to assure the selected factory preset water temperature.
- 240V models when operated at 220V will have approximately a 15% wattage decrease.
- 120V models when operated 110V will have approximately a 15% wattage decrease.
- Factory setting of 110°F or above require cold water mixing at the hand wash faucet.
- Microprocessor limits temperature increase according to the pre-selected temperature.
- M40/277 not certified to CAN/CSA STD C22.2 No. 88



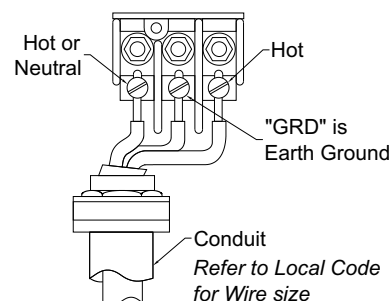
Notes:

1. Heater to be installed below the level of all hot water outlets serviced by the Heater.
2. Diagram shown with standard 3/8" Compression Fitting. Optional 1/2" NPT Male water connections available.

- ① Instant-Flow Micro Heater
- ② Electrical Junction Supply Box (Optional)
- ②A 2095-1 Disconnect Switch (Optional)
- ③ Electrical Supply Conduit
- ④ Electrical Supply Wire
- ⑤ Dual Outlet Stop, 3/8" Comp. Outlet Connections
- ⑥ 3/8" Comp. x 1/4" NPT Fittings (supplied)
- ⑦ 3/8" Hot Water Outlet
- ⑧ 3/8" Cold Water Inlet



WIRING CONNECTION



ATTENTION:

Unit must be hard wired.

NOTE: Heaters are single phase. All tests are measured at the output of the heater.

Chronomite Laboratories assumes no responsibility for use of void or suspended data. © Copyright Chronomite Laboratories, Inc. Member of Morris Group International. City of Industry, CA Please visit www.chronomite.com for most current specifications.

SELECTION SUMMARY & APPROVAL FOR MANUFACTURING

Company	Revenue	Profit	Assets	Liabilities	Equity
Company A	100	20	120	80	40
Company B	150	30	180	120	60
Company C	200	40	240	160	80
Company D	250	50	300	200	100
Company E	300	60	360	240	120
Company F	350	70	420	280	140
Company G	400	80	480	320	160
Company H	450	90	540	360	180
Company I	500	100	600	400	200
Company J	550	110	660	440	220
Company K	600	120	720	480	240
Company L	650	130	780	520	260
Company M	700	140	840	560	280
Company N	750	150	900	600	300
Company O	800	160	960	640	320
Company P	850	170	1020	680	340
Company Q	900	180	1080	720	360
Company R	950	190	1140	760	380
Company S	1000	200	1200	800	400
Company T	1050	210	1260	840	420
Company U	1100	220	1320	880	440
Company V	1150	230	1380	920	460
Company W	1200	240	1440	960	480
Company X	1250	250	1500	1000	500
Company Y	1300	260	1560	1040	520
Company Z	1350	270	1620	1080	540
Company AA	1400	280	1680	1120	560
Company AB	1450	290	1740	1160	580
Company AC	1500	300	1800	1200	600
Company AD	1550	310	1860	1240	620
Company AE	1600	320	1920	1280	640
Company AF	1650	330	1980	1320	660
Company AG	1700	340	2040	1360	680
Company AH	1750	350	2100	1400	700
Company AI	1800	360	2160	1440	720
Company AJ	1850	370	2220	1480	740
Company AK	1900	380	2280	1520	760
Company AL	1950	390	2340	1560	780
Company AM	2000	400	2400	1600	800
Company AN	2050	410	2460	1640	820
Company AO	2100	420	2520	1680	840
Company AP	2150	430	2580	1720	860
Company AQ	2200	440	2640	1760	880
Company AR	2250	450	2700	1800	900
Company AS	2300	460	2760	1840	920
Company AT	2350	470	2820	1880	940
Company AU	2400	480	2880	1920	960
Company AV	2450	490	2940	1960	980
Company AW	2500	500	3000	2000	1000
Company AX	2550	510	3060	2040	1020
Company AY	2600	520	3120	2080	1040
Company AZ	2650	530	3180	2120	1060
Company BA	2700	540	3240	2160	1080
Company BB	2750	550	3300	2200	1100
Company BC	2800	560	3360	2240	1120
Company BD	2850	570	3420	2280	1140
Company BE	2900	580	3480	2320	1160
Company BF	2950	590	3540	2360	1180
Company BG	3000	600	3600	2400	1200
Company BH	3050	610	3660	2440	1220
Company BI	3100	620	3720	2480	1240
Company BJ	3150	630	3780	2520	1260
Company BK	3200	640	3840	2560	1280
Company BL	3250	650	3900	2600	1300
Company BM	3300	660	3960	2640	

Model Number & Options	Quantity
------------------------	----------

Contact	Title
---------	-------

Signature _____ Date _____
(Approval for Manufacturing)

Date _____

CHRONOMITE
LABORATORIES, INC.

PH. 800-447-4962

626-937-4270

FAX 626-937-4279

www.chronomite.com