

### ML Series



#### Metal Lath Access Doors

**Doors** are designed specifically to meet the needs of plaster construction. Door has a 3" wide metal lath on all four sides for keying into plaster.

**Door and Frame** are fabricated from 16 gage, galvanized steel.

**Hinge** is a concealed continuous piano hinge.

**Latch** is screwdriver operated.

**Finish** is a white prime coat suitable for painting.

#### Guide Specification

Provide Elmdor® ML Series, Metal Lath access doors (specify model number and options). Access door and frame shall be fabricated from 16 gage, galvanized steel with a white prime coat finish. Door shall have a continuous piano hinge. Latch shall be screwdriver operated. Finish shall be a white prime coat suitable for painting.



Member of U.S. Green  
Building Council

**ML**

Revised: 08/31/18

Recyclable  
Product





## MODEL NUMBER AND OPTIONS SELECTION

## BASE MODEL NUMBER

☐ ML Metal Lath Access Door

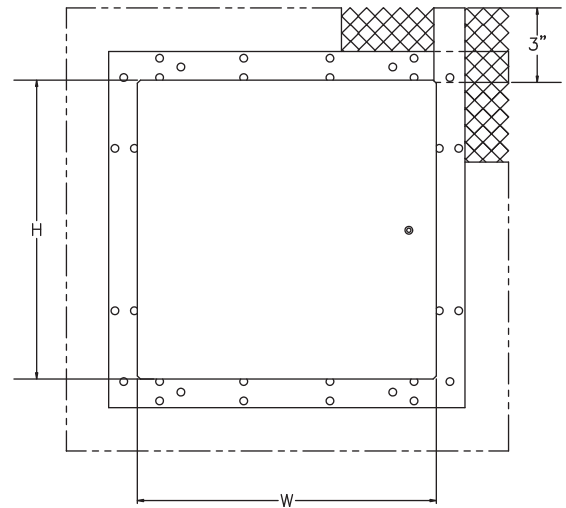
## Suffix Options

- ☐ -AKL Allen Key Latch  
☐ -CL Cylinder Lock (one per door)  
☐ -CLD Cylinder Lock with Dust Shutter (one per door)  
☐ -SS Stainless Steel Construction (Type 304 No. 4 Satin Finish)

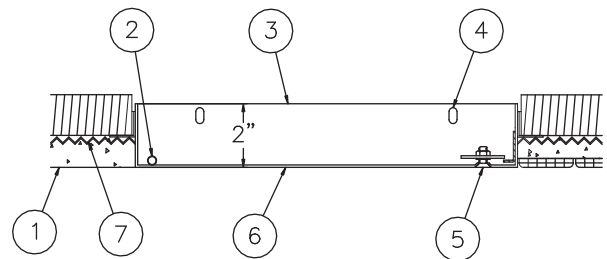
## STANDARD AVAILABLE SIZES

Special sizes available upon request.

NOMINAL DOOR SIZE (W X H)	WALL OPENING (minimum required)	LATCHES	WEIGHT
ML 8" x 8"	8-1/4" x 8-1/4"	1	4 lbs.
ML 8" x 12"	8-1/4" x 12-1/4"	1	5.5 lbs.
ML 10" x 10"	10-1/4" x 10-1/4"	1	5.5 lbs.
ML 12" x 12"	12-1/4" x 12-1/4"	1	6.5 lbs.
ML 12" x 16"	12-1/4" x 16-1/4"	1	9 lbs.
ML 12" x 18"	12-1/4" x 18-1/4"	1	10 lbs.
ML 12" x 24"	12-1/4" x 24-1/4"	2	11.5 lbs.
ML 14" x 14"	14-1/4" x 14-1/4"	2	8 lbs.
ML 16" x 16"	16-1/4" x 16-1/4"	2	11 lbs.
ML 16" x 20"	16-1/4" x 20-1/4"	3	12.5 lbs.
ML 18" x 18"	18-1/4" x 18-1/4"	3	13 lbs.
ML 18" x 24"	18-1/4" x 24-1/4"	5	20 lbs.
ML 20" x 24"	20-1/4" x 24-1/4"	5	22 lbs.
ML 20" x 30"	20-1/4" x 30-1/4"	5	23.5 lbs.
ML 24" x 24"	24-1/4" x 24-1/4"	3	21 lbs.
ML 24" x 30"	24-1/4" x 30-1/4"	5	24.5 lbs.
ML 24" x 36"	24-1/4" x 36-1/4"	6	29.5 lbs.
ML 30" x 30"	30-1/4" x 30-1/4"	7	25.5 lbs.
ML 36" x 36"	36-1/4" x 36-1/4"	8	28 lbs.



FRONT VIEW



SIDE VIEW

## NOTES:

1. FINISH LINE, PLASTER OVER MASONRY
2. CONCEALED PIANO HINGE
3. FRAME
4. MOUNTING HOLES
5. SCREWDRIVER OPERATED LATCH
6. DOOR
7. METAL LATH

WARNING: Cancer and Reproductive Harm - www.P65Warnings.ca.gov

Dimensions are subject to manufacturer's tolerance of plus or minus 1/4". Elmdor/Stoneman assumes no responsibility for use of void or suspended data. Please visit [www.elmdorstoneman.com](http://www.elmdorstoneman.com) for most current specifications. © Copyright 2009 Elmdor/Stoneman, City of Industry, CA, A Division of Acorn Engineering Company.

## SELECTION SUMMARY &amp; APPROVAL FOR MANUFACTURING

Model Number & Options \_\_\_\_\_ Quantity \_\_\_\_\_  
Company \_\_\_\_\_ Date \_\_\_\_\_  
Contact \_\_\_\_\_ Title \_\_\_\_\_  
Approval for Manufacturing/Signature \_\_\_\_\_

ML

Revised: 08/31/18