

# Model S0430

Wall Mounted Eyewash, Stainless Steel Bowl



## SPECIFICATIONS:

Model S0430 is a wall mounted eyewash, with a stainless steel bowl, ABS plastic eyewash spray heads, an inline strainer and a stay-open 1/2" ball valve with a push handle.

## STANDARD EQUIPMENT:

**Spray Head Assembly:** ABS yellow plastic eyewash heads with integral flip dust covers, internal flow controls and filters to remove debris from the water. An anti-microbial agent is molded into the ABS material, providing integrated protection.

**Valve:** 1/2" NPT chrome plated brass stay-open ball valve with a stainless steel push handle and a 50 mesh inline strainer.

**Water Supply:** 1/2" NPT female threaded, chrome plated brass inlet.

**Waste:** Chrome plated brass, 1-1/4" OD tailpiece.

**Bowl:** Stainless steel, 11-3/4" diameter bowl.

**Mounting:** 11 gage galvanized steel wall bracket with a yellow powder coated finish.

**Universal Sign:** ANSI compliant, vertical identification sign.

**Weekly Test Tag:** A waterproof test card to record the date and inspector's name for weekly functional testing of the unit.

☐ Model: S0430



## OPTIONAL ACCESSORIES:

Additional costs may be incurred

- |                                   |   |
|-----------------------------------|---|
| <input type="checkbox"/> - BF     | Barrier free, handicap accessible   |
| <input type="checkbox"/> - CS1    | Stainless steel "clam shell" cover  |
| <input type="checkbox"/> - FLW2   | Flow switch, single pole  |
| <input type="checkbox"/> - FPV    | Freeze protection valve   |
| <input type="checkbox"/> - IWH1   | Instantaneous water heater - 208 volts  |
| <input type="checkbox"/> - IWH2   | Instantaneous water heater - 240 volts  |
| <input type="checkbox"/> - LWB    | Less wall bracket   |
| <input type="checkbox"/> - MS1    | MAP (magnetically actuated proximity) switch, for one (1) actuator  |
| <input type="checkbox"/> - PT1    | P-trap, chrome plated brass with 1/4" OD waste outlet   |
| <input type="checkbox"/> - SDC    | Stainless steel dust covers   |
| <input type="checkbox"/> - SPV    | Scald protection valve  |
| <input type="checkbox"/> - SSE    | Stainless steel eyewash spray heads   |
| <input type="checkbox"/> - SV2    | Stainless steel ball valve  |
| <input type="checkbox"/> - ET71-1 | Thermostatic mixing valve is ASSE Listed per the ASSE 1071 standard. The tepid output water complies with ANSI Z358.1 standard. |
| <input type="checkbox"/> "1"      | Auxiliary hand-held drench hose with a self-closing valve (Use model S0431)   |



Member of  
U.S. Green  
Building Council



Recyclable  
Product

Acorn Safety assumes no responsibility for use of void or superseded data. © Copyright Acorn Safety®, City of Industry, CA, Division of Acorn Engineering Company®, Member of Morris Group International™. Please visit [www.acorneng.com](http://www.acorneng.com) for most current specifications.

Submittal # **S0430**  
[EW] Revised: 04/09/14

Product carries the following certifications:



Test rating conditions are compliant to ANSI Z358.1-2009



Division of  
Acorn Engineering Company®,  
Member of  
Morris Group International™

## ACORN SAFETY

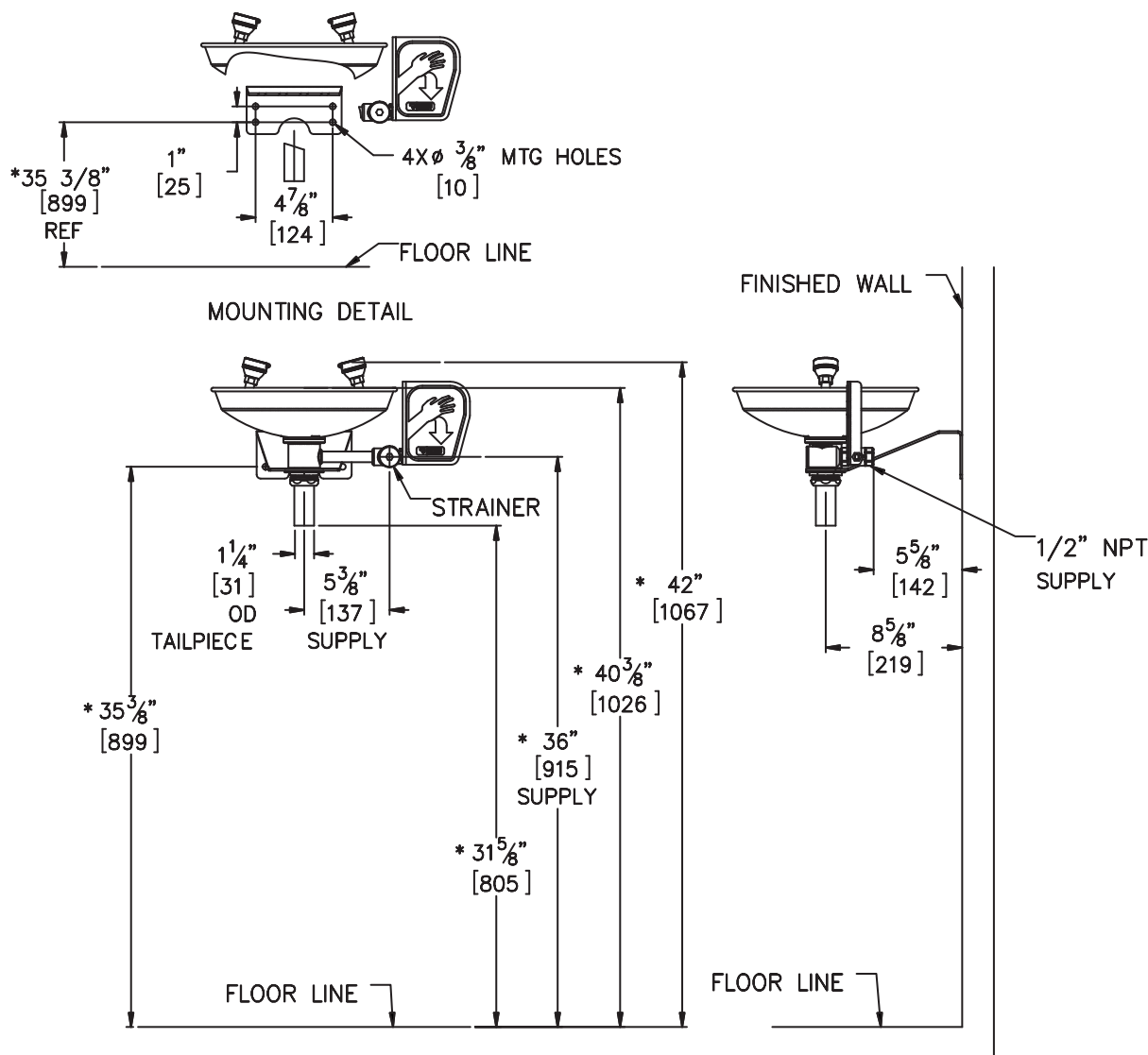
P.O. Box 3527  
City of Industry, CA  
91744 U.S.A.  
Phone 800-591-9372  
626-855-4804

[www.acorneng.com](http://www.acorneng.com)

## TECHNICAL DIMENSIONS

All dimensions are subject to manufacturer's tolerance of plus or minus 1/2" nominal and subject to change without notice. Acorn Safety® assumes no responsibility for use of void or superseded data. Dimensions may change with the addition of optional accessories. © Acorn Safety®, A Division of Acorn Engineering Company®, Member of Morris Group International™. Please visit [www.acorneng.com](http://www.acorneng.com) for most current specifications.

### □ Model S0430 : Wall Mounted Eyewash, Stainless Steel Bowl



#### GENERAL NOTES:

1. ALL DIMENSIONS ARE IN INCHES [MM].
- \*2. DIMENSIONS SHOWN ARE FOR NOMINAL ADULT HEIGHT. ANSI Z358.1 REQUIRES NOZZLES TO BE BETWEEN 33" [838] AND 45" [1143] ABOVE THE FLOOR.

**S0430** Revised: 04/09/14

Acorn Safety warrants that its products are free from defects in material or workmanship under normal use and service for a period of one year from date of shipment. Acorn's liability under this warranty shall be discharged solely by replacement or repair of defective material, provided Acorn is notified in writing within one year from date of shipment, F.O.B. Industry, California.

SELECTION SUMMARY  
& APPROVAL FOR  
MANUFACTURING

Model Number & Options \_\_\_\_\_ Quantity \_\_\_\_\_

Company \_\_\_\_\_

Contact \_\_\_\_\_ Title \_\_\_\_\_

Signature (Approval for Manufacturing) \_\_\_\_\_ Date \_\_\_\_\_



**800-591-9372**  
or 626-855-4804  
[www.acorneng.com](http://www.acorneng.com)