

# Model S2300

*Pedestal Mounted Emergency Shower,  
Stainless Steel Showerhead*



## SPECIFICATIONS:

Model S2300 is a pedestal mounted emergency shower with a stainless steel showerhead and a 1" stay-open ball valve with a pull rod.

## STANDARD EQUIPMENT:

**Showerhead:** Stainless steel, 7-3/8" diameter showerhead with a 20 gpm flow regulator.

**Valve:** 1" NPT rough chrome plated brass stay-open ball valve. Unit is provided with a stainless steel actuator arm and a 29" stainless steel pull rod.

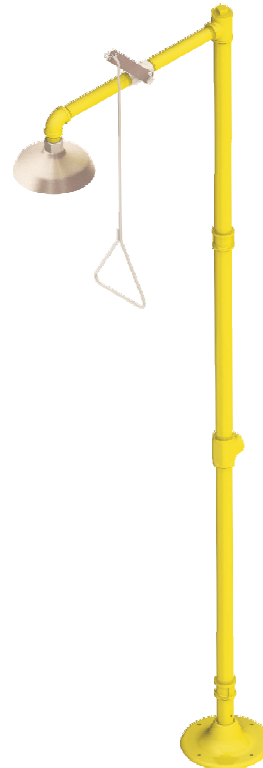
**Water Supply:** 1-1/4" NPT female threaded side or top inlet.

**Piping & Mounting:** Schedule 40 galvanized steel piping and a 9-1/8" diameter cast iron floor flange with a yellow powder coated finish.

**Universal Sign:** ANSI compliant, vertical identification sign.

**Weekly Test Tag:** A water proof test card to record the date and inspector's name for weekly functional testing of the unit.

☐ Model: S2300



## OPTIONAL ACCESSORIES:

*Additional costs may be incurred*

- ☐ - AL1 Electric alarm with light and horn
- ☐ - AL2 Electric alarm with flashing light and horn
- ☐ - FLW1 Flow switch, single pole
- ☐ - MC1 Modesty curtain for horizontal showers
- ☐ - MS1 MAP (magnetically actuated proximity) switch, for one (1) actuator
- ☐ - PR60 60" pull rod
- ☐ - SV1 1" stainless steel ball valve
- ☐ - TMV33 Thermostatic mixing valve is ASSE Listed per the ASSE 1071 standard. The tepid output water complies with ANSI Z358.1 standard.



Member of  
U.S. Green  
Building Council



Recyclable  
Product

Acorn Safety assumes no responsibility for use of void or suspended data. © Copyright 2010 Acorn Safety, City of Industry, CA, A Division of Acorn Engineering Company. Please visit [www.acornsafety.com](http://www.acornsafety.com) for most current specifications.

Submittal # **S2300**  
[SHR] Rev. B 9/15/10

Product carries the  
following certifications:



Test rating conditions are compliant to ANSI Z358.1-2009



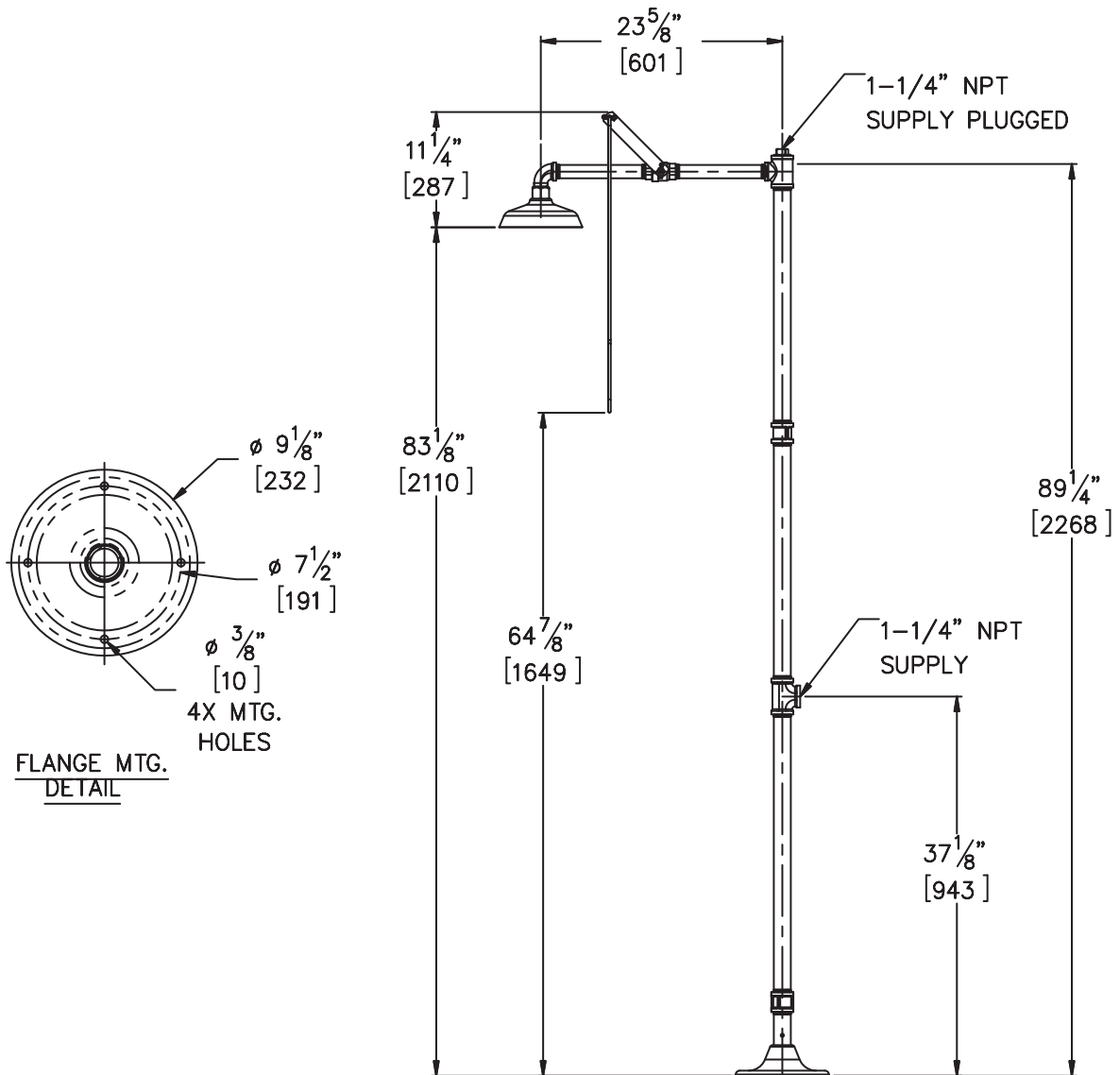
Member of  
Acorn Engineering's  
Family of Companies

ACORN SAFETY  
15125 Proctor Avenue  
City of Industry, CA  
91746 U.S.A.  
Phone 800-591-9372  
626-855-4804  
Fax 626-937-4213  
[www.acornsafety.com](http://www.acornsafety.com)

## TECHNICAL DIMENSIONS

All dimensions are nominal and subject to manufacturer's change without notice. Acorn Safety assumes no responsibility for use of void or suspended data. Dimensions may change with the addition of optional accessories. © 2008 Acorn Safety, a Division of Acorn Engineering Company. Please visit [www.acornsafety.com](http://www.acornsafety.com) for most current specifications.

☐ **Model S2300** : Pedestal Mounted Emergency Shower, Stainless Steel Showerhead



### GENERAL NOTES:

1. ALL DIMENSIONS ARE IN INCHES [MM].

Rough-in # **S2300** Rev. A 11/20/08

Acorn Safety warrants that its products are free from defects in material or workmanship under normal use and service for a period of one year from date of shipment. Acorn's liability under this warranty shall be discharged solely by replacement or repair of defective material, provided Acorn is notified in writing within one year from date of shipment, F.O.B. Industry, California.

SELECTION SUMMARY  
& APPROVAL FOR  
MANUFACTURING

Model Number & Options \_\_\_\_\_ Quantity \_\_\_\_\_

Company \_\_\_\_\_

Contact \_\_\_\_\_ Title \_\_\_\_\_

Signature \_\_\_\_\_  
(Approval for Manufacturing) \_\_\_\_\_ Date \_\_\_\_\_



**800-591-9372**  
or 626-855-4804  
[www.acornsafety.com](http://www.acornsafety.com)